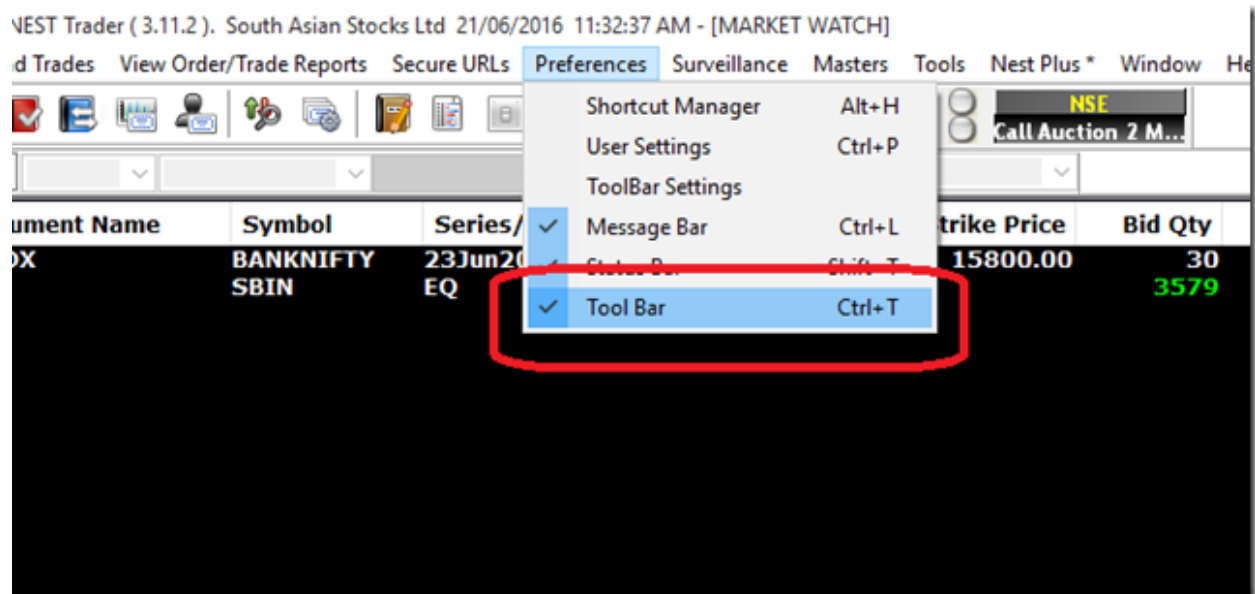


NEST Settings

Please use following settings in NEST terminal while using SAT with NEST.

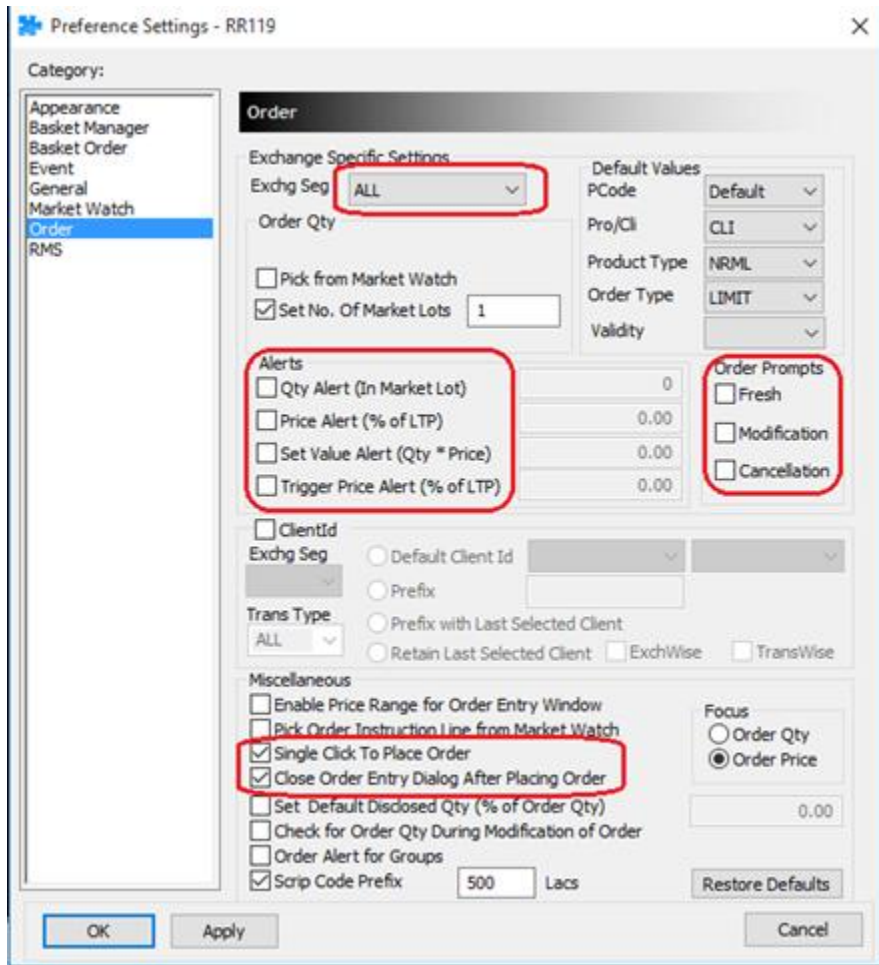
1. Check Tool Bar



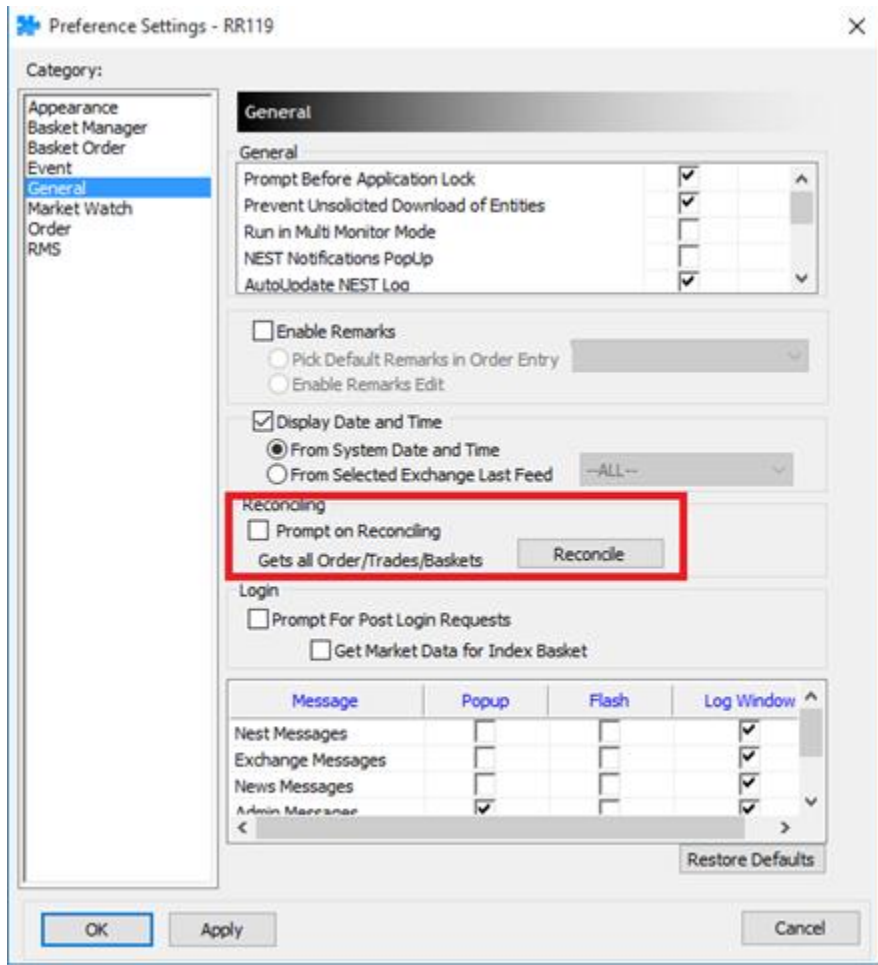
2. Open User Settings



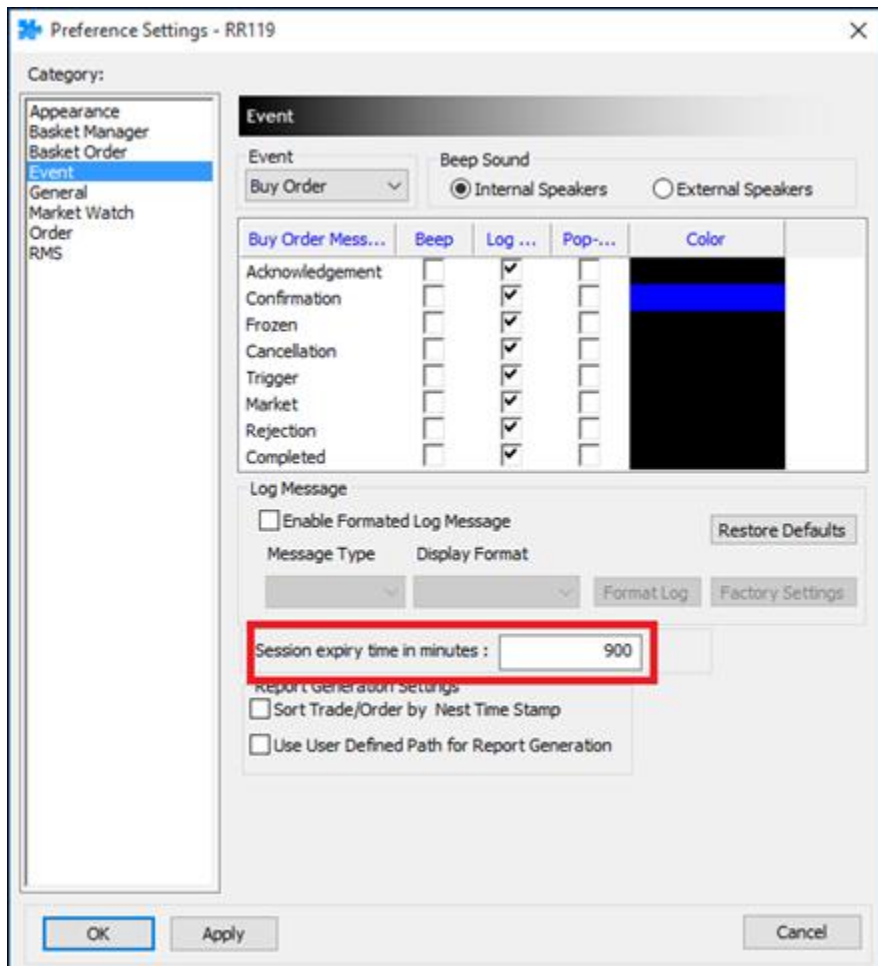
3. Make the Order Tab Setting As Per the Below Screen Shoot and Press Apply



4. Make General Tab Settings As Follows and Press Apply



5. Set event tab settings as follows and Press Apply



Click Apply and then Press OK button

For more information and supports contact

www.keyresarch.in

+91 903 919 0033

+91 903 903 5500